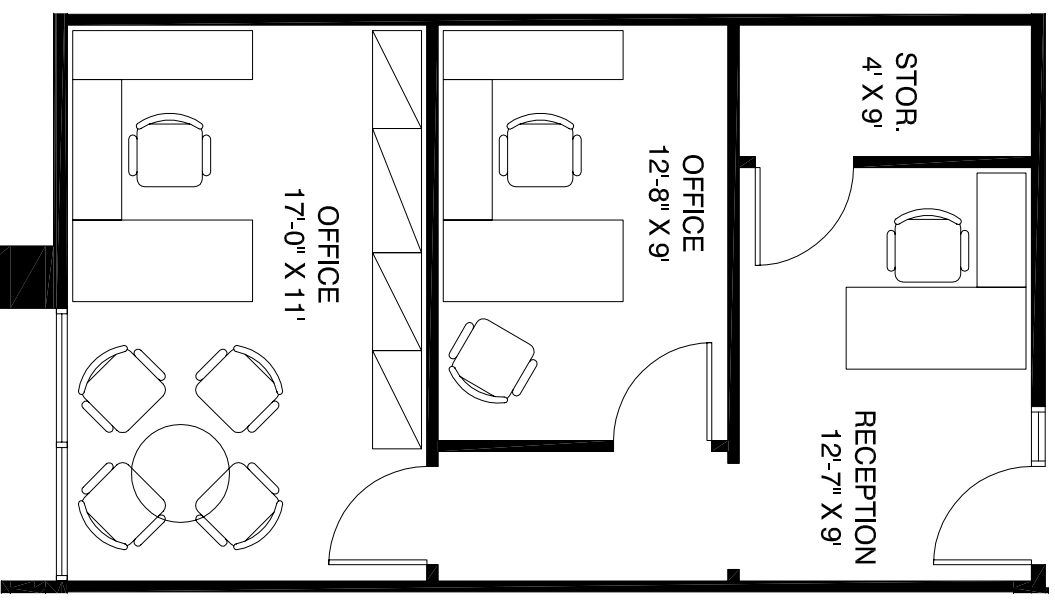


KEY PLAN
 NOT TO SCALE
 NORTH



AVAILABLE
SUITE 280 512 USF / 604 RSF

CONCOURSE OFFICE PARK

6380 LBJ FREEWAY DALLAS, TEXAS



10.05.06

For Leasing Information Contact :

Jeff Anderson
 972.774.2522
 jeff_anderson@transwestern.net
 Matt Hurlbut
 972.774.2532
 matt_hurlbut@transwestern.net



TRANSWESTERN
 COMMERCIAL SERVICES